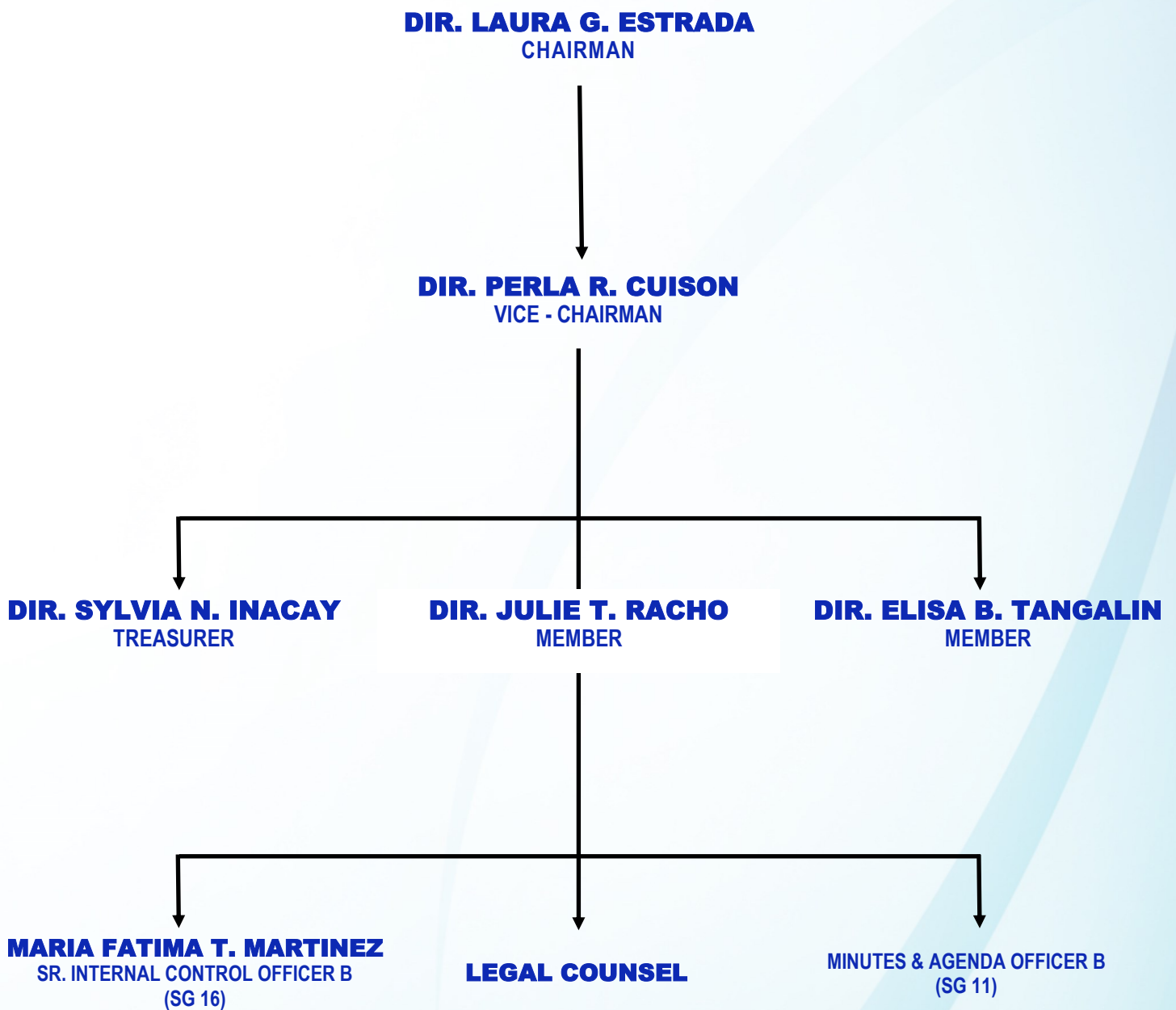




ALAMINOS CITY WATER DISTRICT ORGANIZATIONAL CHART

OFFICE OF THE BOARD OF DIRECTORS





ALAMINOS CITY WATER DISTRICT ORGANIZATIONAL CHART

OFFICE OF THE GENERAL MANAGER

ATTY. NAPOLEON F. SEGUNDERA, JR
General Manager B
(SG-27)

RUTH LEAH C. CASAÑA
Executive Assistant C
(SG-14)

SECRETARY A
(SG-9)

CELSO C. PERALTA
Driver
(SG-4)



ALAMINOS CITY WATER DISTRICT ORGANIZATIONAL CHART

FINANCE SERVICES DEPARTMENT

JOSEPH T. JIMENEZ
DEPARTMENT MANAGER B
(SG-25)

BUDGET & ACCOUNTING DIVISION

RICHARD R. BARNACHEA
DIVISION MANAGER B
(SG-23)

EXECUTIVE ASSISTANT A
(SG-20)

SENIOR CORPORATE ACCOUNTANT A
(SG-18)

CORPORATE ACCOUNTANT
(SG-15)

EXCELSA R. GOMEZ
CASHIER A
(SG-16)

MARTHA R. SISON
SR. ACCOUNTING PROCESSOR A
(SG-12)

MARIE PAZ V. VILLENA
SR. ACCOUNTING PROCESSOR A
(SG-12)

MARK KELVIN F. DACANAY
CORPORATE BUDGET EXAMINER
(SG-10)

CASHIER C
(SG-12)

ARVIN T. ASTRONOMIA
ACCOUNTING PROCESSOR A
(SG-8)

CASHIERING ASSISTANT
(SG-8)

CLERK PROCESSOR C
(SG 4—1)



ALAMINOS CITY WATER DISTRICT ORGANIZATIONAL CHART

WATER RESOURCES/PRODUCTION DIVISION

ROLANDO J. ROMERO
DIVISION MANAGER B
(SG-23)

EXECUTIVE ASSISTANT A
(SG-20)

SENIOR WATER UTILITIES/DEVELOPMENT OFFICER
(SG-18)

WATER UTILITIES MANAGEMENT/DEVELOPMENT OFFICER A
(SG-16)

ISMAEL O. FERNANDEZ
SENIOR WATER RESOURCE FACILITIES TECHNICIAN
(SG-12)

MICHAEL ALEJANDRO C. RASING
SENIOR WATER RESOURCE FACILITIES OPERATOR A
(SG-10)

CHRISTOPHER A. BAUTISTA
SENIOR WATER RESOURCE FACILITIES OPERATOR A
(SG-10)

JOJO R. CABATIC
SENIOR WATER RESOURCE FACILITIES OPERATOR A
(SG-10)

LOUWALLIEN G. VALENCIA
PLANT ELECTRICIAN/MECHANIC C
(SG-8)

ARTURO G. RABINA
WATER RESOURCE FACILITIES OPERATOR A
(SG-8)

ARNEL C. ADREJILLO
WATER RESOURCE FACILITIES OPERATOR A
(SG-8)

FLORENTINO B. OFRANCIA
WATER RESOURCE FACILITIES OPERATOR A
(SG-8)

MARIO A. DEFONTORUM
WATER RESOURCE FACILITIES OPERATOR A
(SG-4)



ALAMINOS CITY WATER DISTRICT ORGANIZATIONAL CHART

ENGINEERING DEPARTMENT

DEPARTMENT MANAGER B
(SG-25)

CONSTRUCTION & MAINTENANCE DEPARTMENT

DEPARTMENT MANAGER B
(SG-23)

EXCELLENTE R. SARMIENTO
EXECUTIVE ASSISTANT A
(SG-20)

MARICEL S. ADREJILLO
SENIOR PROJECT & DEVELOPMENT OFFICER A
(SG-18)

SENIOR PROJECT & DEVELOPMENT OFFICER A
(SG-16)

ROBERTO R. BANIQUED
CONSTRUCTION FOREMAN B
(SG-14)

ENGINEER B
(SG-12)

DRAFTSMAN A
(SG-8)

DRAFTSMAN B
(SG-6)

ROGER O. BACAY
DRIVER
(SG-4)

PLUMBER C
(SG-3)

ADRIEL C. AGLIBOT
PLUMBER C
(SG-3)



ALAMINOS CITY WATER DISTRICT ORGANIZATIONAL CHART

CUSTOMER SERVICES DIVISION

ADORA E. BRAVO
DIVISION MANAGER B
(SG-23)

EXECUTIVE ASSISTANT A
(SG-20)

SENIOR UTILITIES/CUSTOMER SERVICE OFFICER
(SG-18)

ERLYN C. ALCON
UTILITIES/CUSTOMER SERVICE OFFICER B
(SG-14)

MARIFE A. RABINA
UTILITIES/CUSTOMER SERVICE ASSISTANT B
(SG-10)

JINEA JOY P. DOMINGO
UTILITIES/CUSTOMER SERVICE ASSISTANT B
(SG-10)

JESSIELYN Q. TABLANG
UTILITIES/CUSTOMER SERVICE ASSISTANT B
(SG-10)

BENJAMIN E. ECHON
WATER/SEWERAGE MAINTENANCE MAN A
(SG-8)

MANUEL B. CAMBAY
WATER/SEWERAGE MAINTENANCE MAN B
(SG-6)

VIRGILIO RADAM
PLUMBER C
(SG-3)

DOMINADOR TABLANG
PLUMBER C
(SG-3)

BUENAFLOR B. RAMOS JR
PLUMBER C
(SG-3)

ALEJANDRO DELA CRUZ
PLUMBER C
(SG-3)

MICHAEL ALCEDO
PLUMBER C
(SG-3)



ALAMINOS CITY WATER DISTRICT ORGANIZATIONAL CHART

HR and ADMINISTRATIVE DEPARTMENT

GENESIS G. ARIOLA
DEPARTMENT MANAGER B
(SG-25)

ADMINISTRATION and GENERAL SERVICES DIVISION

CHARAMIE O. MANAOIS
DIVISION MANAGER B
(SG-23)

EXECUTIVE ASSISTANT A
(SG-20)

AMANDA V. SANTIAGO
SENIOR INDUSTRIAL RELATIONS AND DEVELOPMENT OFFICER A
(SG-18)

|
ELENA N. REYNALDO
ADMINISTRATION/GENERAL SERVICES OFFICER A
(SG-16)

|
MANAGEMENT INFORMATION SYSTEM RESEARCHER
(SG-12)

|
DANIEL A. LEGASPI IV
ADMINISTRATION SERVICES ASSISTANT B
(SG-10)

ADMINISTRATION SERVICES ASSISTANT A
(SG-8)

WILSON A. DE LEON III
PROPERTY/SUPPLY ASSISTANT B
(SG-8)

|
FREDDIE R. PURGANAN
STOREKEEPER C
(SG-6)

JAIME R. PALADAN
DRIVER
(SG-4)

STOREKEEPER D
(SG-4)

CHERRY R. CASIPIT
CLERK PROCESSOR C
(SG-4)

EDUARDO B. BUENAFLOR
UTILITY WORKER A
(SG-3)

INDUSTRIAL SECURITY GUARD C
(SG-3)



ALAMINOS CITY WATER DISTRICT ORGANIZATIONAL CHART

COMMERCIAL SERVICES DEPARTMENT

MA. LOURDES DE FRANCIA
DEPARTMENT MANAGER B
(SG-25)

COMMERCIAL ACCOUNTS DIVISION

DIVISION MANAGER B
(SG-23)

EXECUTIVE ASSISTANT A
(SG-20)

SENIOR UTILITIES/CUSTOMER SERVICE OFFICER
(SG-18)

UTILITIES/CUSTOMER SERVICE OFFICER B
(SG-14)

KRISTINE F. GOMEZ
UTILITIES/CUSTOMER SERVICE ASSISTANT A
(SG-12)

EULISA D. NACIONAL
UTILITIES/CUSTOMER SERVICE OFFICER B
(SG-10)

CHARLEY D. BACOLCOL
UTILITIES/CUSTOMER SERVICE ASSISTANT A
(SG-4)